

# EMFACE Submentum: MRI Volume Analysis

## Efficacy of Synchronized RF+ and HIFES Muscle Stimulation in Enhancing the Appearance of the Submental Region

Carolyn I. Jacob M.D.<sup>1</sup>; Lesley Clark-Loeser M.D., FAAD<sup>2</sup>; Barry DiBernardo M.D.<sup>3</sup>

1. Chicago Cosmetic Surgery and Dermatology, Chicago, IL, USA

2. Precision Skin Institute, Davie, FL, USA

3. New Jersey Plastic Surgery, New Jersey, NY, USA; University of Medicine and Dentistry of New Jersey, Surgery, Montclair, NJ, USA

Presented at: ASLMS Baltimore, Maryland, 'Challenging Submentum Case' presented by Dr. Yael Halaas, Thursday, April 11, 2024

### Highlights

- 37 subjects (42.2 years  $\pm$  12.4, with skin types II-V) received four 20-minute treatments with:
  - EMFACE Submentum (Sync RF+ & HIFES)
  - EMFACE Cheeks (Sync RF & HIFES)
- No reduction in cheek fat was observed
- 94% of subjects reported high satisfaction with treatment outcomes



10.77 ml

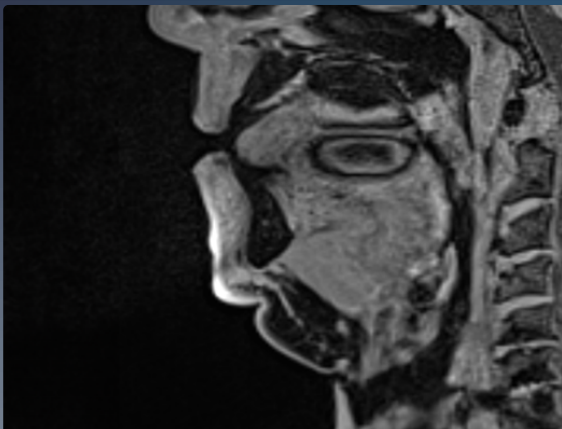
Double-Chin Reduction\*

36%

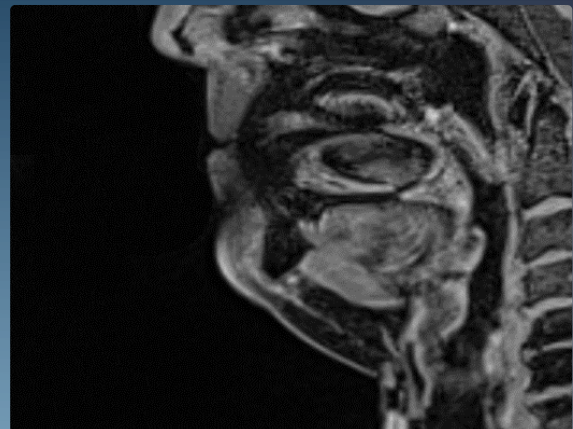
Double-Chin Reduction\*\*

### Changes in muscle and fat tissue in MRI

Baseline



After 1 Month



Visibly reduced submental fat and improved tone of digastric muscle post-treatment

\*After 3 months, analyzed by 3D analysis

\*\*After 3 months, analyzed by MRI